

S.W. COR SEC 11, T17N, R65

057841

LARAMIE COUNTY  
CHEYENNE, WY.

CERTIFIED LAND CORNER RECORDATION

'89 MAY 30 AM 11:27

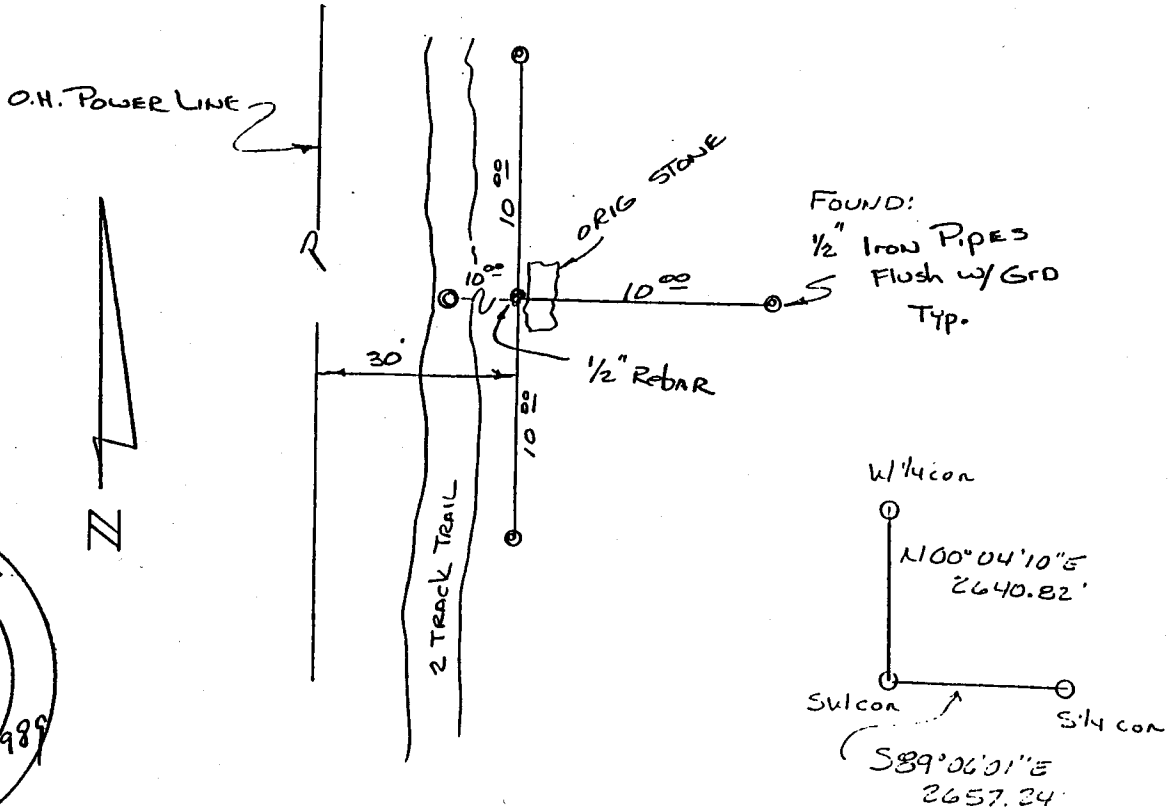
DESCRIPTION OF CORNER EVIDENCE FOUND, AND ORIGINAL RECORD (If known)

FOUND ORIG. STONE WITH 1/2" REBAR ALONG WEST SIDE.  
ALSO FOUND 4 - 1/2" IRON PIPES PLACED AS SHOWN BELOW.

DESCRIPTION OF MONUMENT AND ACCESSORIES ESTABLISHED  
TO PERPETUATE THE ORIGINAL LOCATION OF THIS CORNER:

HELD THIS 1/2" REBAR AS THE CORNER.

SKETCH, WITH COURSE AND DISTANCE TO ADJACENT CORNER IF DETERMINED IN THIS SURVEY.  
(May Sketch or Paste Reproduction on Reverse Side.)



I, Wallace C. Muscott certify that I have carefully performed or reviewed the work done on the diagrammed corner as reported on this recordation form and approve the same.

Wallace C. Muscott 3830  
Signature of Surveyor Registration No.

STATE OF WYOMING,  
Office of Clerk and Recorder,  
County of \_\_\_\_\_

This "corner record" was filed for record on the \_\_\_\_\_ day of \_\_\_\_\_, 19\_\_\_\_, was noted on the cross-index plat and is assigned page No. \_\_\_\_\_, in book No. \_\_\_\_\_

Janet C. Whitehead  
County Official

Cross Index No.	J-17	T. 17N	R. 65W	Mer. 6th
				Mer.
				Mer.
				Mer.
				Mer.
				Mer.
				Mer.

BOOK 1274